

**BB 65 Mayan**



**BB 61 Royal Navy**



**BB 62 Burgundy**



**BB 64 Delft**



**BB 63 Mauve**



**BB 66 Laurel**



**BB 55 Bisque**



**BB 53 Bone**



**BB 52 Ash**



**BB 60 Dusk**



**BB 56 Copperwood**



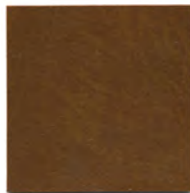
**BB 54 Wheat**



**BB 58 Sterling**



**BB 67 Vine**



**BB 51 Brandy**



**BB 57 Florentine Brown**



**BB 59 Ebony**

# NAUGAHYDE®

BRAND FABRIC

## Bourbon Street



Pattern	Roll Width	Roll Size	Weight per Lin. Yd.	MVSS-302	Cal. Fire Code 117	Ultraviolet Stable Pigment	Mildew Resistant	Fed. Spec. CID A-A-2950	BIFMA Class 1	FAA, FAR 25.853	Port Authority of NY/NJ	Boston Fire Code	Sulfide Stain Resistant	Oil Resistant	Static Dissipative	ASTME 1428-Pink Stain Test	Cold Crack	Abrasion #8 Cotton Duck	Pattern Repeat
All-American (AM)	54"	35	28.8	X	X	X	X	X	X	X	X	X	X	X	X	X	-20°	250,000	N/A
Allure (AL)	54"	35	26.0	X	X	X	X	X	X				X	X	X	X	-20°	250,000	N/A
Bourbon Street (BB)	54"	30	28.2	X	X	X			X				X	X	X		-20°	250,000	N/A
Burkshire (BRK)	54"	30	37.0	X	X	X	X	X	X	X	X	X	X	X	X	X	-20°	250,000	N/A
Chameã II (CY)	54"	35	26.0	X	X	X	X		X				X	X	X	X	-20°	250,000	N/A
Dolphin (DOL)	54"	40	26.8	X	X	X	X		X				X	X	X	X	-20°	250,000	N/A
English Pub (EP)	54"	30	37.0	X	X	X	X	X	X	X	X	X	X	X	X	X	-20°	250,000	N/A
Expressions (EX)	54"	30	37.0	X	X	X	X	X	X	X	X	X	X	X	X	X	-20°	250,000	N/A
Marblestone (MS)	54"	30	37.0	X	X	X	X	X	X	X	X	X	X	X	X	X	-20°	250,000	N/A
NaugaLeather (EE/MI)	54"	35	28.2	X	X	X	X		X				X	X	X	X	-20°	500,000	N/A
Nauga Soft (PR)	54"	35	28.2	X	X	X	X		X				X	X	X	X	-20°	1,000,000	N/A
Neochrome III (NEO)	54"	30	37.0	X	X	X	X	X	X	X	X	X	X	X	X	X	-20°	250,000	N/A
Oakwood (OAK)	54"	30	31.8	X	X	X	X	X	X	X	X	X	X	X	X	X	-20°	250,000	9 1/2"
Oxen (OX)	54"	40	25.3	X	X	X			X				X	X	X		-20°	250,000	N/A
Phoenix (PH)	54"	30	36.5	X	X	X	X	X	X	X	X	X	X	X	X	X	-20°	250,000	N/A
Rogue II (RU)	54"	30	33.5	X	X	X			X				X	X	X		-20°	250,000	N/A
Southampton (SN)	54"	30	34.0	X	X	X	X	X	X	X	X	X	X	X	X	X	-20°	250,000	13"
Spirit Millennium (US)	54"	30	37.0	X	X	X	X	X	X	X	X	X	X	X	X	X	-20°	250,000	N/A
Sta-Soft (STA)	54"	30	28.5	X	X	X	X		X				X	X	X	X	-20°	250,000	N/A
Stratford/Surfside (SF)	54"	30	29.7	X	X	X	X		X				X	X	X	X	-20°	250,000	N/A
Twilight (TL)	54"	30	33.3	X	X	X	X	X	X	X	X	X	X	X	X	X	-20°	250,000	N/A
Universal (MT)	54"	40	26.0	X	X	X	X		X				X	X	X	X	-20°	250,000	N/A
Zodiac (ZD)	54"	30	36.3	X	X				X				X	X			-20°	250,000	N/A

## BREATHING NAUGAHYDE®

### Disinfectability

Naugahyde with Advanced BeautyGard® has been formulated to achieve a superior level of disinfectability with disinfectant products containing sodium hypochlorite (common household bleach) diluted 1:10.

### Serviceability

Naugahyde with Advanced BeautyGard® provides outstanding protection in difficult medical and healthcare environments.

- This product contains agents to protect it against bacterial and fungal micro-organisms.



Advanced BeautyGard® protective top coat finish is produced from environmentally friendly materials and processes and is technically formulated to achieve the highest performance standards.

